

City of Glendale

Hollywood Production Center and Residential Project Draft Environmental Impact Report Volume II - Appendices

Prepared for:

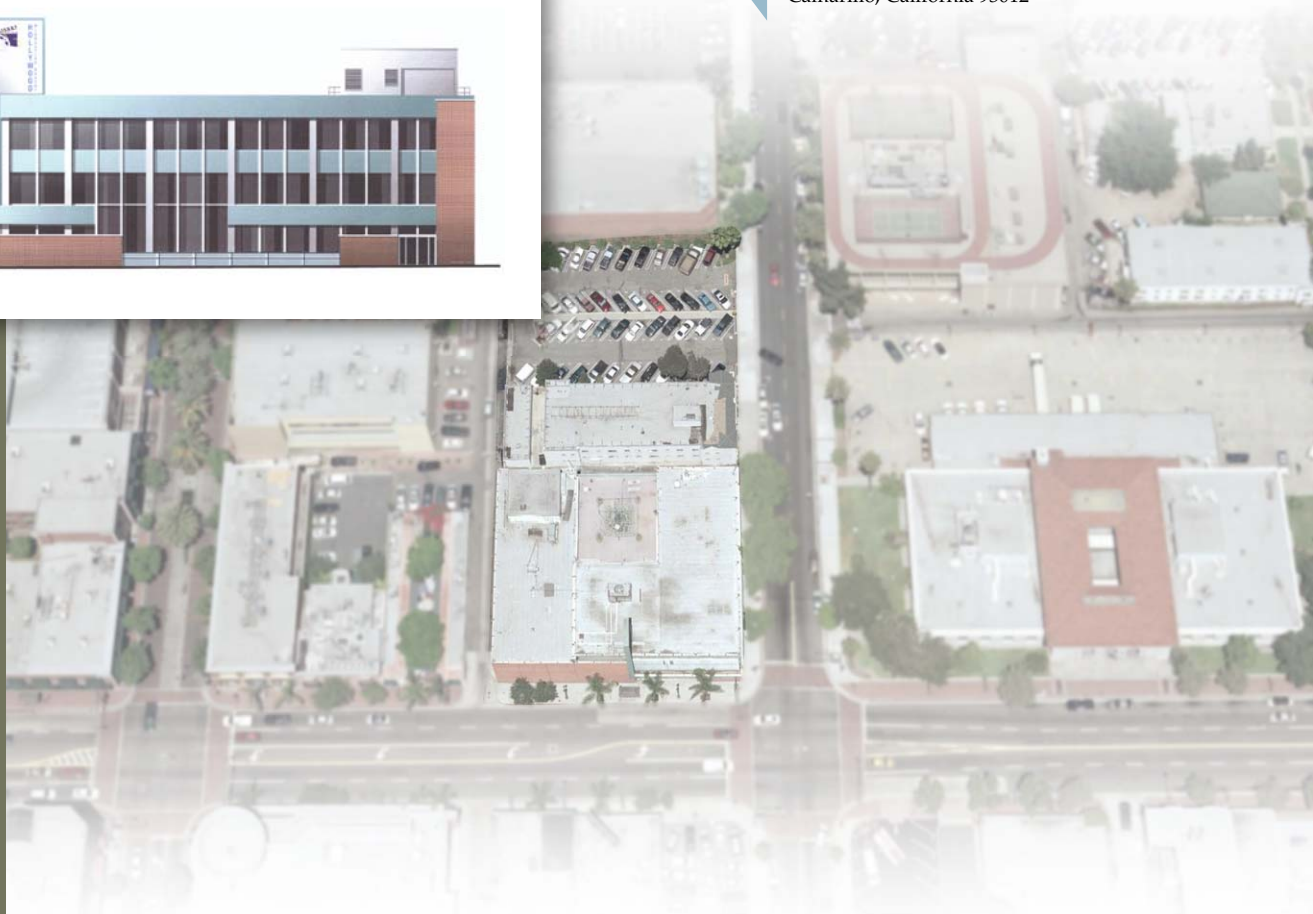
Glendale Redevelopment Agency
633 East Broadway, Room 201
Glendale, California 91206-4387

Prepared By:



IMPACT SCIENCES, INC.

803 Camarillo Springs Road, Suite A
Camarillo, California 93012



October 2007

**DRAFT
ENVIRONMENTAL IMPACT REPORT
FOR
HOLLYWOOD PRODUCTION CENTER AND
RESIDENTIAL PROJECT**

Volume II – Appendices

Prepared for:

Glendale Redevelopment Agency
633 East Broadway, Room 201
Glendale, California 91206-4387

Prepared by:

Impact Sciences, Inc.
803 Camarillo Springs Road, Suite A
Camarillo, California 93012

October 2007

TABLE OF CONTENTS

Section	Page
1.0 INTRODUCTION.....	1.0-1
2.0 SUMMARY.....	2.0-1
3.0 PROJECT DESCRIPTION.....	3.0-1
4.0 ENVIRONMENTAL IMPACT ANALYSIS	4.0-1
4.1 Aesthetics	4.1-1
4.2 Air Quality	4.2-1
4.3 Cultural Resources.....	4.3-1
4.4 Geology and Soils.....	4.4-1
4.5 Hazards and Hazardous Materials.....	4.5-1
4.6 Hydrology and Water Quality	4.6-1
4.7 Land Use and Planning.....	4.7-1
4.8 Noise.....	4.8-1
4.9 Population and Housing.....	4.9-1
4.10 Public Services.....	4.10-1
4.10.1 Fire Protection and Emergency Medical Services	4.10.1-1
4.10.2 Police Protection.....	4.10.2-1
4.10.3 Schools.....	4.10.3-1
4.10.4 Libraries	4.10.4-1
4.11 Recreation.....	4.11-1
4.12 Traffic, Circulation, and Parking.....	4.12-1
4.13 Utilities and Service Systems.....	4.10-1
4.13.1 Water Service.....	4.13.1-1
4.13.2 Sewer	4.13.2-1
4.13.3 Solid Waste	4.13.3-1
5.0 SIGNIFICANT IRREVERSIBLE ENVIRONMENTAL CHANGES	5.0-1
6.0 GROWTH INDUCEMENT	6.0-1
7.0 ALTERNATIVES.....	7.0-1
8.0 LIST OF EIR PREPARERS.....	8.0-1
9.0 REFERENCES AND PERSONS CONSULTED.....	9.0-1

Appendices

- 1.0 – Notice of Preparation (NOP) and Comments on the NOP
 - Notice of Preparation (NOP)
 - Comments on the NOP
- 4.2 – Air Quality Calculations
- 4.3 – Historic Resources
 - Historic Resource Evaluation, Kaplan Chen Kaplan, September 2007
 - Historical Evaluation, LSA, May 2002
- 4.4 – Preliminary Geotechnical Evaluation
- 4.5 – Hazards and Hazardous Materials
 - Phase I Environmental Site Assessment – 225 East Broadway, December 1997
 - Phase I Environmental Site Assessment – 111 North Louise, August 2007
 - Phase I Environmental Site Assessment – 115-121 North Louise, August 2007
 - Phase I Environmental Site Assessment – 115-121 North Louise, January 2001
 - Soil-Gas Investigation – 225 East Broadway
 - Asbestos Survey – 225 East Broadway
- 4.8 – Noise Modeling Results
- 4.12 – Traffic Impact Analysis